

Name _____

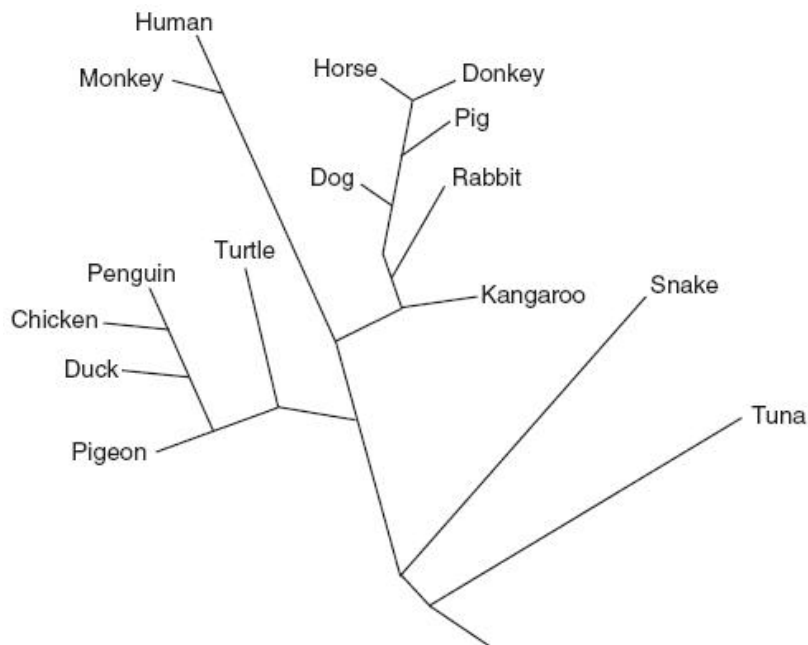
Keystone Warm-ups Evolution Unit

Copy down all 4 answer choices for the daily warm-up from the board in the space below its question. Choose the best answer by circling its letter. Then, after we go over it, write the correct answer in the block provided on the front of the packet.

1	<input type="text"/>	2	<input type="text"/>	3	<input type="text"/>	4	<input type="text"/>	5	<input type="text"/>
6	<input type="text"/>	7	<input type="text"/>	8	<input type="text"/>				

1. Based on their analysis of the differences in amino acid sequences of one kind of protein, scientists prepared the evolutionary tree shown below.

According to this diagram, the DNA of which pair of organisms would show the greatest similarity?



(A)

(B)

(C)

(D)

2. Which statement is best supported by the theory of evolution?

(A)

(B)

(C)

(D)

3. Evolutionary changes have been observed in beak size in a population of medium ground finches in the Galapagos Islands. Given a choice of small and large seeds, the medium ground finch eats mostly small seeds, which are easier to crush. However, during dry years, all seeds are in short supply. Small seeds are quickly consumed, so the birds are left with a diet of large seeds. Studies have shown that this change in diet may be related to an increase in the average size of the beak of the medium ground finch.

The most likely explanation for the increase in average beak size of the medium ground finch is that the

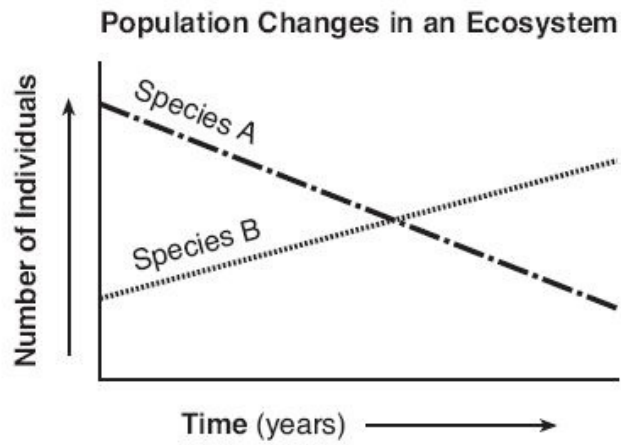
(A)

(B)

(C)

(D)

4. The graph below represents the populations of two different species in an ecosystem over a period of several years.



Which statement is a possible explanation for the changes shown?

(A)

(B)

(C)

(D)

5. When is extinction of a species most likely to occur?

(A)

(B)

(C)

(D)

6. Certain insects resemble the bark of the trees on which they live. Which statement provides a possible biological explanation for this resemblance?

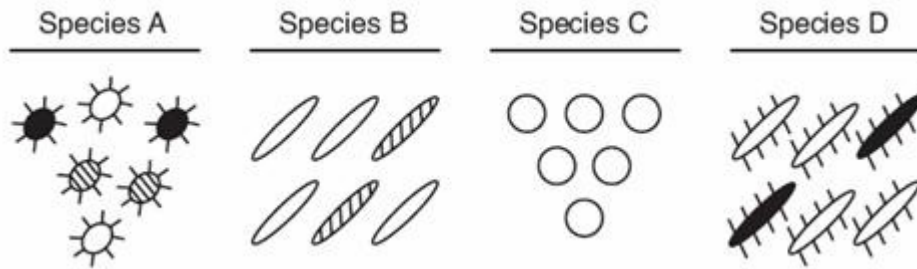
(A)

(B)

(C)

(D)

7. The diagram below represents four different species of bacteria.



Which statement is correct concerning the chances of survival for these species if there is a change in the environment?

(A)

(B)

(C)

(D)

8. In North America, the eastern spotted skunk mates in late winter, and the western spotted skunk mates in late summer. Even though their geographic ranges overlap, the species do not mate with each other. What most likely prevents these two species from interbreeding?

(A)

(B)

(C)

(D)